

MOTORS WITH POWER UP TO 850 W

LFB SERIES - Non-reversible

WATT: 190 / CONSUMPTION: 480 NI/1'

Data sheet
LFB1D



1. Cylindrical keyed shaft
2. Grip zone
3. Air inlet
4. Air exhaust

Technical specification

Right rotation - Model	LFB1D
Right rotation - Code	8711183
Speed rpm - No-load	3500
Speed rpm - at Max Power	1900
Torque Nm - at Max Power	0,9
Torque Nm - Stall Torque	1,9

Form features

The normal delivery condition: cylindrical shaft and body as shown in the photo.

Optional:

Shaft

- threaded - indication /AF (left rotation excluded - subject to checks for reversible)

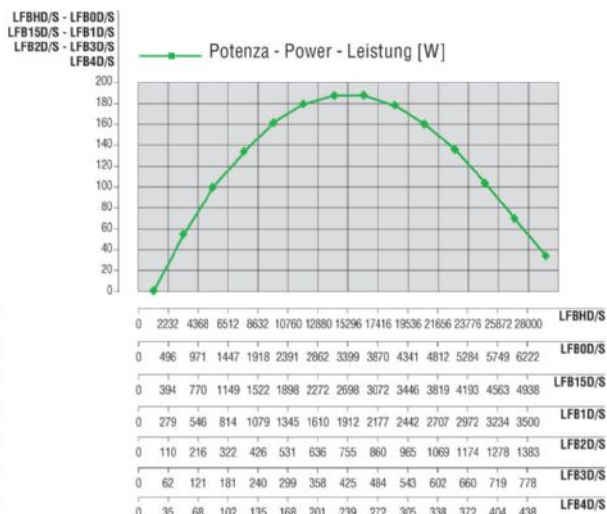
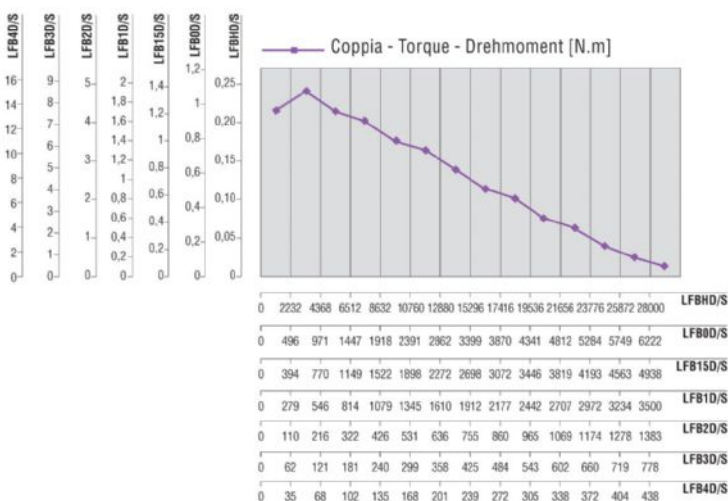
- conical - indication /AC

- with collets - indication / AP

Body

- with diamond flange coupling

Characteristic curves



MOTORS WITH POWER UP TO 850 W

LFB SERIES - Non-reversible

WATT: 190 / CONSUMPTION: 480 NI/1'

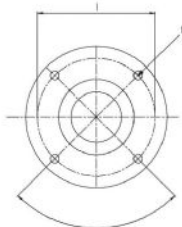
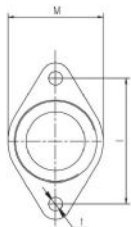
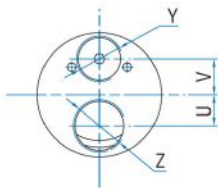
Data sheet
LFB1D

Permissible radial and axial loads

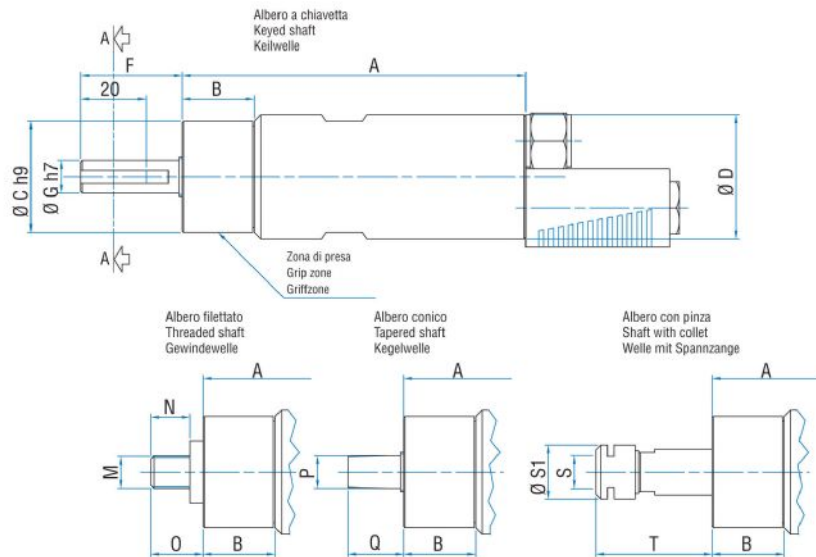
Model	Code	Fr (N)	Fa (N)	Co (N)
LFB1D	8711183	1050	550	2350

Overall dimensions

Serie LFB Non reversibili
Series LFB Non-reversible
Serie LFB Nicht umsteuerbar



Flange disponibili per alcuni modelli.
Flanges available for some models.
Flansche erhältlich für einige Modelle.



Model	Code	A	B	C	D	F	G	H	I	L	M	N	O	P	Q	S	S1
LFB1D	8711183	105	22	34	38	31	10	2,5	4	M4	3/8"x24UNF	12	16	B10	17	ER16	22