

MOTORS WITH POWER UP TO 850 W

LFB SERIES - Reversible

WATT: 160 / CONSUMPTION: 400 NI/1'

Data measured at pressure of 6 bar - Minimum supply hose diameter: 6 mm.

Data sheet
LFBHR



1. Cylindrical keyed shaft
2. Grip zone
3. Air inlets
4. Air exhaust

Technical specification

- Model	LFBHR
- Code	8731181
Speed rpm - No-load	25000
Speed rpm - at Max Power	14750
Torque Nm - at Max Power	0,1
Torque Nm - Stall Torque	0,2

Form features

The normal delivery condition: cylindrical shaft and body as shown in the photo.

Optional:

Shaft

- threaded - indication /AF (left rotation excluded - subject to checks for reversible)

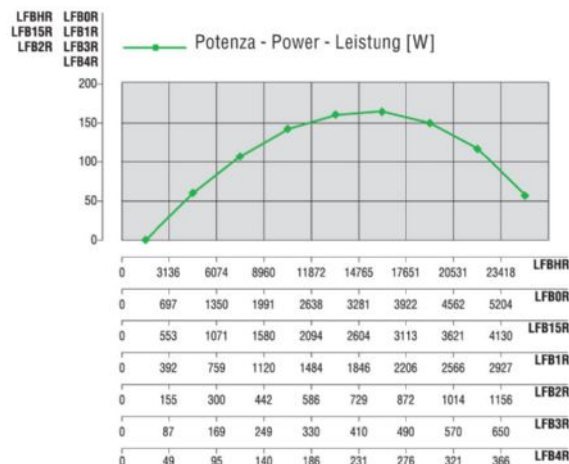
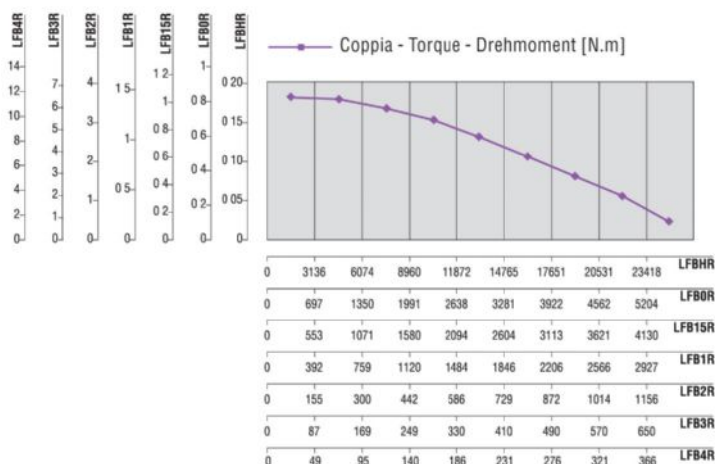
- conical - indication /AC

- with collets - indication / AP

Body

- with diamond flange coupling

Characteristic curves



MOTORS WITH POWER UP TO 850 W

LFB SERIES - Reversible

WATT: 160 / CONSUMPTION: 400 NI/1'

Data measured at pressure of 6 bar - Minimum supply hose diameter: 6 mm.

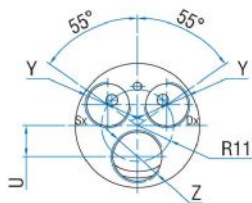
Data sheet
LFBHR

Permissible radial and axial loads

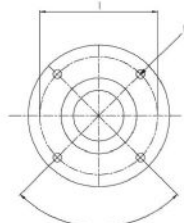
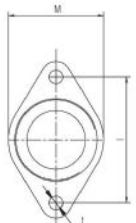
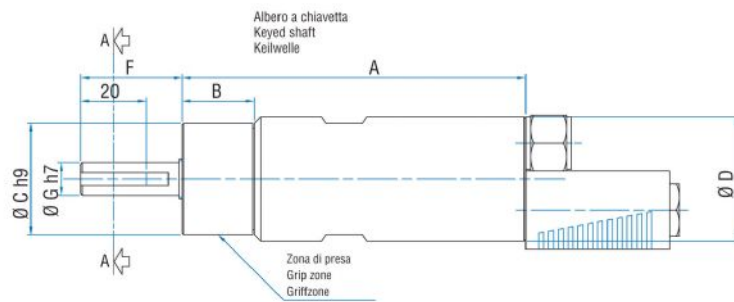
Model	Code	Fr (N)	Fa (N)	Co (N)
LFBHR	8731181	750	550	2350

Overall dimensions

Serie LFB Reversible
Series LFB Reversible
SerieLFB Umsteuerbar



Sez. A-A



Flange disponibili per alcuni modelli.
Flanges available for some models.
Flansche erhältlich für einige Modelle.

Model	Code	A	B	C	D	F	G	H	I	L	M	N	O	P	Q	S	S1
LFBHR	8731181	105	22	34	38	31	10	/	/	M4	3/8"x24UNF	12	16	B10	17	ER11	16,5