

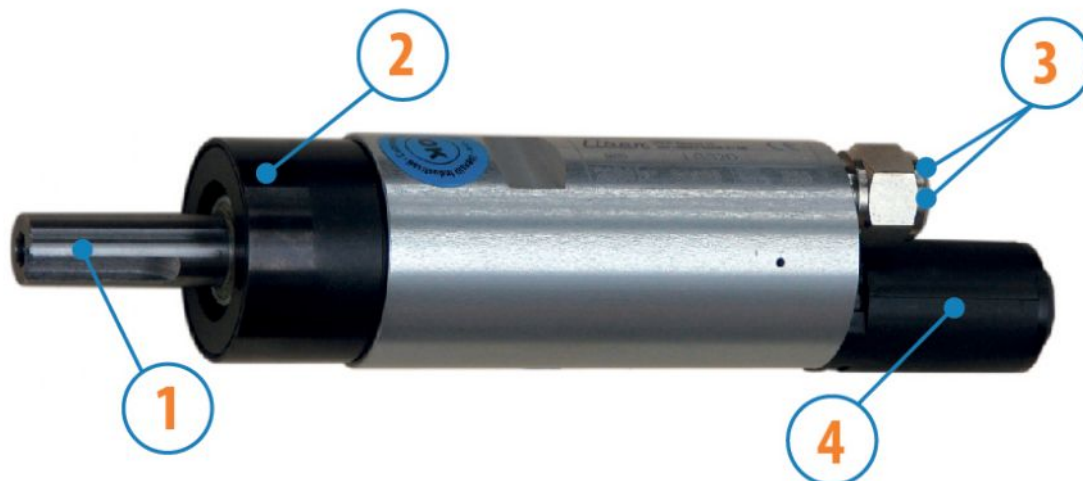
# MOTORS WITH POWER UP TO 850 W

LGS SERIES - Reversible

WATT: 400 / CONSUMPTION: 560 NI/1"

Data measured at pressure of 6 bar - Minimum supply hose diameter: 8 mm

Data sheet  
**LGS3R**



1. Cylindrical keyed shaft
2. Grip zone
3. Air inlets
4. Air exhaust

## Technical specification

- Model	LGS3R
- Code	8731190
Speed rpm - No-load	1000
Speed rpm - at Max Power	570
Torque Nm - at Max Power	6,8
Torque Nm - Stall Torque	9,9

## Form features

The normal delivery condition: cylindrical shaft and body as shown in the photo.

Optional:

Shaft

- threaded - indication /AF (left rotation excluded - subject to checks for reversible)

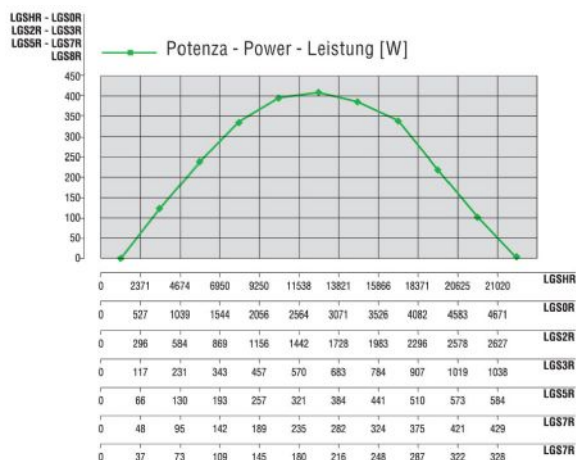
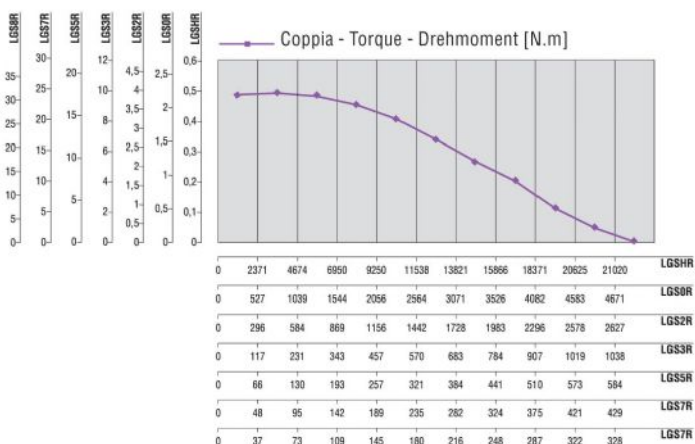
- conical - indication /AC

- with collets - indication / AP

Body

- with diamond flange coupling

## Characteristic curves



# MOTORS WITH POWER UP TO 850 W

LGS SERIES - Reversible

WATT: 400 / CONSUMPTION: 560 NI/1"

Data measured at pressure of 6 bar - Minimum supply hose diameter: 8 mm

Data sheet  
**LGS3R**

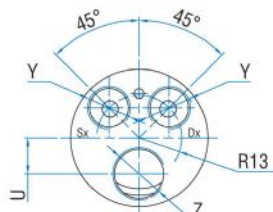
## Permissible radial and axial loads

Model	Code	Fr (N)	Fa (N)	Co (N)
LGS3R	8731190	1000	1850	3750

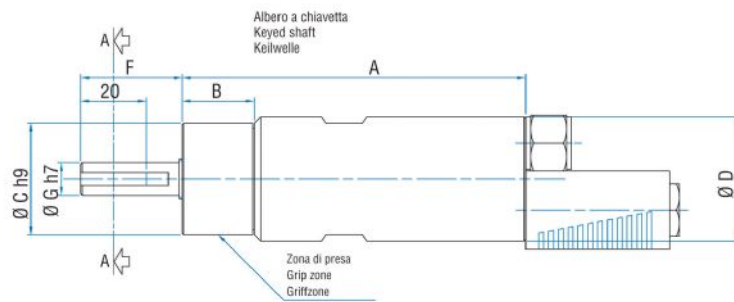
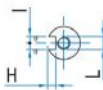
## Overall dimensions

Serie LGS  
Series LGS  
Serie LGS

Reversibile  
Reversible  
Umsteuerbar



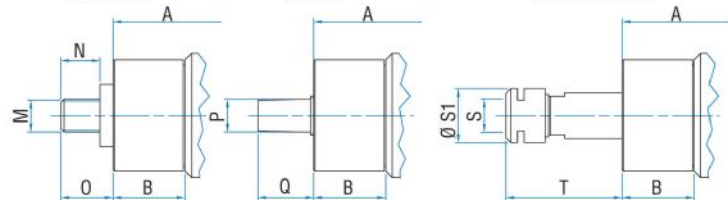
Sez. A-A



Albero filettato  
Threaded shaft  
Gewindewelle

Albero conico  
Tapered shaft  
Kegelwelle

Albero con pinza  
Shaft with collet  
Welle mit Spannzange



Flange disponibili per alcuni modelli.  
Flanges available for some models.  
Flansche erhältlich für einige Modelle.

Model	Code	A	B	C	D	F	G	H	I	L	M	N	O	P	Q	S
LGS3R	8731190	143,5	51,5	40	42	36	13	3	5	M5	1/2"x20UNF	16	20,5	B12	21	ER16