

MOTORS WITH POWER UP TO 850 W

P SERIES - Reversible

WATT: 570 / CONSUMPTION: 830 NI/1'

Data measured at pressure of 6 bar - Minimum supply hose diameter: 10 mm

mm

Data sheet
P20R



1. Cylindrical keyed shaft
2. Grip zone
3. Air inlets
4. Air exhaust

Technical specification

- Model	P20R
- Code	8731134
Speed rpm - No-load	2400
Speed rpm - at Max Power	1350
Torque Nm - at Max Power	4,1
Torque Nm - Stall Torque	6,7

Form features

The normal delivery condition: cylindrical shaft and body as shown in the photo.

Optional:

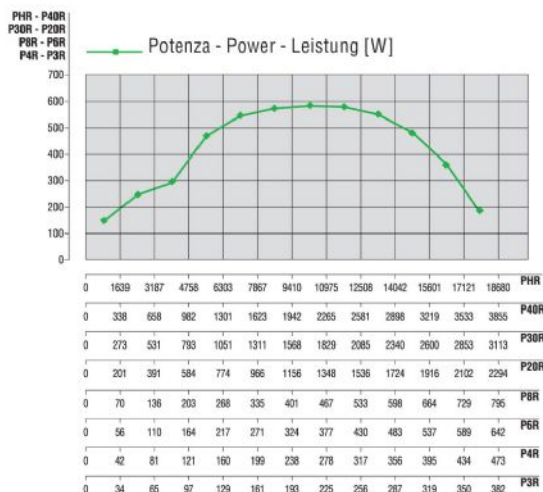
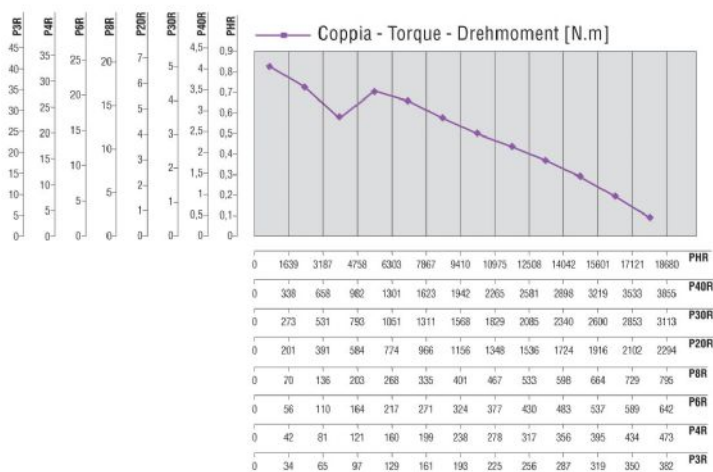
Shaft

- threaded - indication /AF (left rotation excluded - subject to checks for reversible)

- conical - indication /AC

- with collets - indication / AP

Characteristic curves



MOTORS WITH POWER UP TO 850 W

P SERIES - Reversible

WATT: 570 / CONSUMPTION: 830 NI/1'

Data measured at pressure of 6 bar - Minimum supply hose diameter: 10 mm

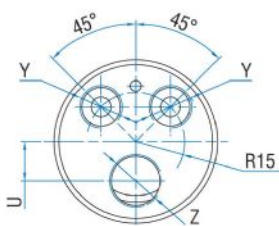
Data sheet
P20R

Permissible radial and axial loads

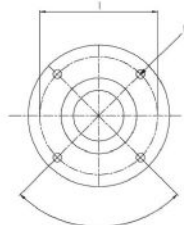
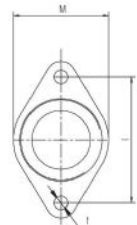
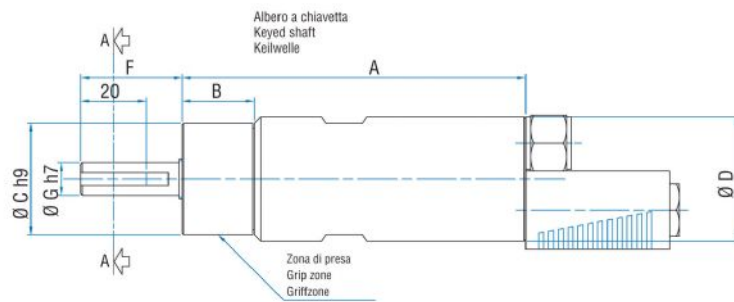
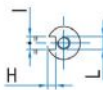
Model	Code	Fr (N)	Fa (N)	Co (N)
P20R	8731134	2050	2350	4750

Overall dimensions

Serie P Reversibile
Series P Reversible
Serie P Umsteuerbar



Sez. A-A



Flange disponibili per alcuni modelli.
Flanges available for some models.
Flansche erhältlich für einige Modelle.

Model	Code	A	B	C	D	F	G	H	I	L	M	N	O	P	Q	S	S
P20R	8731134	126	31	48	50	31,5	14	3	5	M6	1/2"x20UNF	16	20,5	B12	26	ER16	2