

MOTORS WITH POWER UP TO 850 W

SLGS SERIES - Reversible

WATT: 410 / CONSUMPTION: 720 NI/1'

Data measured at pressure of 6 bar - Minimum supply hose diameter: 10 mm

Data sheet
SLGSHR



1. Cylindrical keyed shaft
2. Grip zone
3. Air inlets
4. Air exhaust

Technical specification

- Model	SLGSHR
- Code	8731194
Speed rpm - No-load	15600
Speed rpm - at Max Power	7900
Torque Nm - at Max Power	0,5
Torque Nm - Stall Torque	0,7

Form features

The normal delivery condition: cylindrical shaft and body as shown in the photo.

Optional:

Shaft

- threaded - indication /AF (left rotation excluded - subject to checks for reversible)

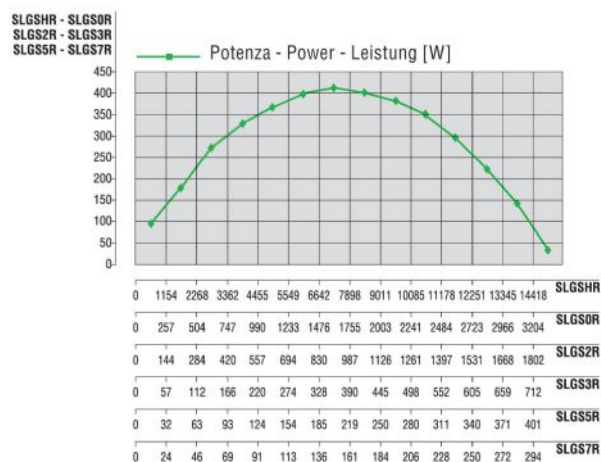
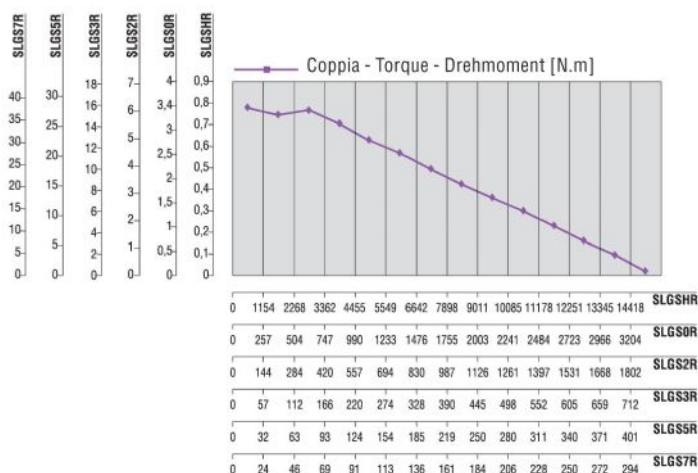
- conical - indication /AC

- with collets - indication / AP

Body

- with diamond flange coupling

Characteristic curves



MOTORS WITH POWER UP TO 850 W

SLGS SERIES - Reversible

WATT: 410 / CONSUMPTION: 720 NI/1'

Data measured at pressure of 6 bar - Minimum supply hose diameter: 10 mm

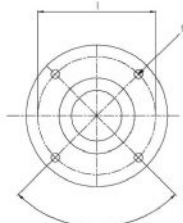
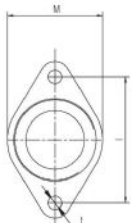
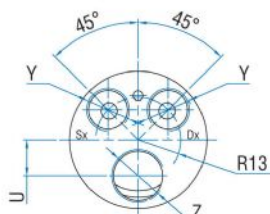
Data sheet
SLGSHR

Permissible radial and axial loads

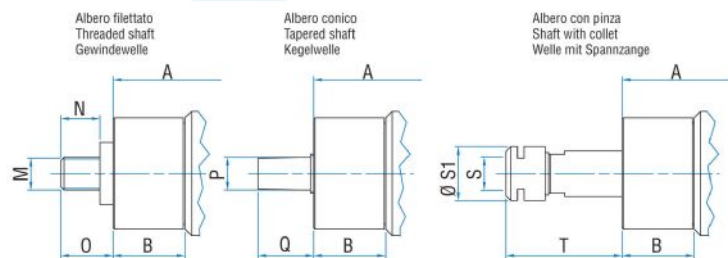
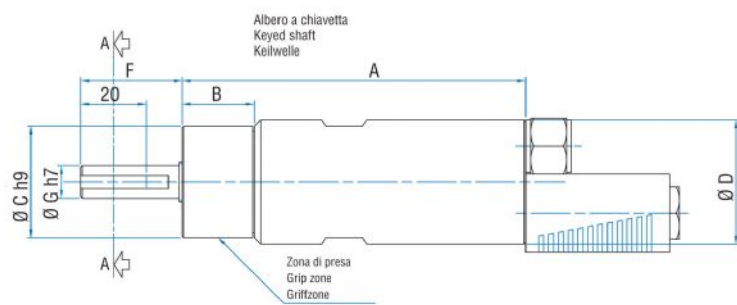
Model	Code	Fr (N)	Fa (N)	Co (N)
SLGSHR	8731194	1250	1850	3750

Overall dimensions

Serie SLGS Reversibile
Series SLGS Reversible
Serie SLGS Umsteuerbar



Flange disponibili per alcuni modelli.
Flanges available for some models.
Flansche erhältlich für einige Modelle.



Model	Code	A	B	C	D	F	G	H	I	L	M	N	O	P	Q	S
SLGSHR	8731194	143,5	26,5	40	42	36	13	/	/	M5	1/2"x20UNF	16	20,5	B12	21	ER16