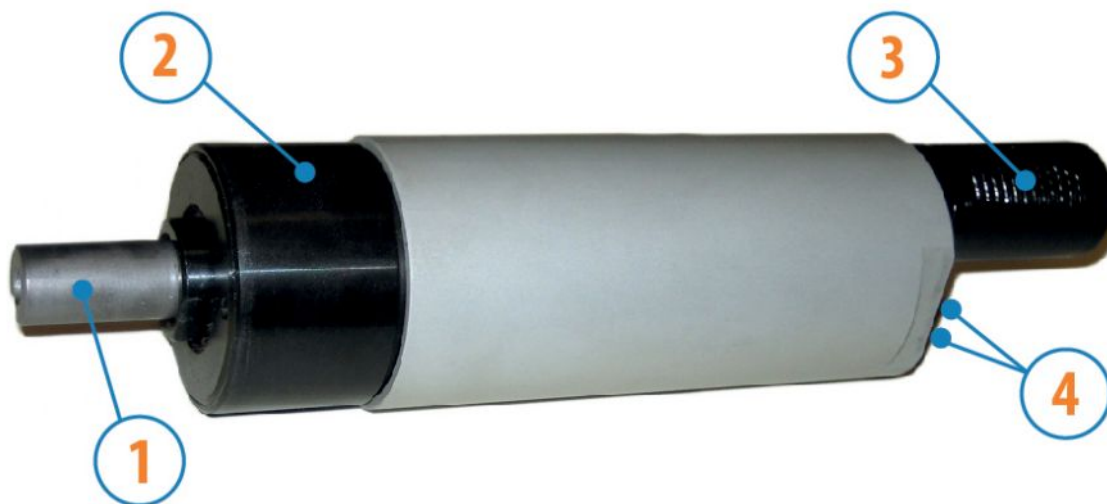


MOTORS WITH POWER UP TO 850 W

SP SERIES - Reversible

WATT: 610 / CONSUMPTION: 890 NI/1"

Data sheet
SP30R



1. Cylindrical keyed shaft
2. Grip zone
3. Air exhaust
4. Air inlets

Technical specification

- Model	SP30R
- Code	8731252
Speed rpm - No-load	2300
Speed rpm - at Max Power	1150
Torque Nm - at Max Power	5,1
Torque Nm - Stall Torque	9,2

Form features

The normal delivery condition: cylindrical shaft and body as shown in the photo.

Optional:

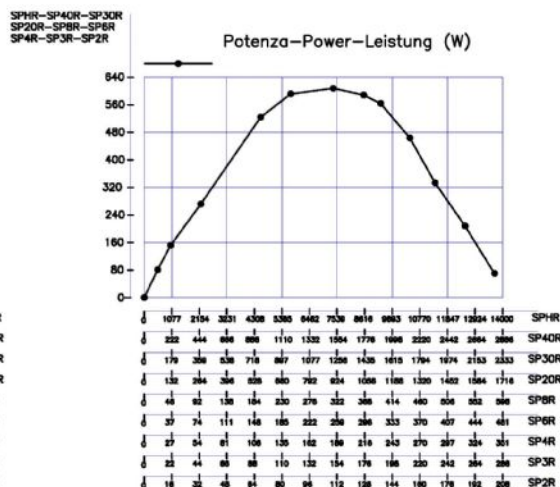
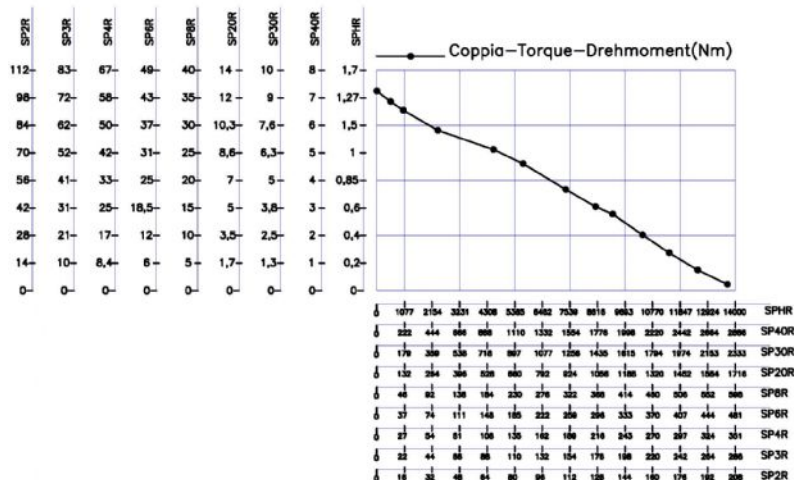
Shaft

- threaded - indication /AF (left rotation excluded - subject to checks for reversible)

- conical - indication /AC

- with collets - indication / AP

Characteristic curves



MOTORS WITH POWER UP TO 850 W

SP SERIES - Reversible

WATT: 610 / CONSUMPTION: 890 NI/1"

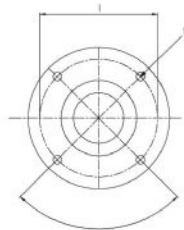
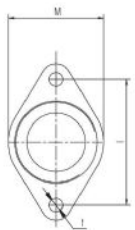
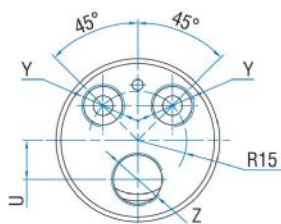
Data sheet
SP30R

Permissible radial and axial loads

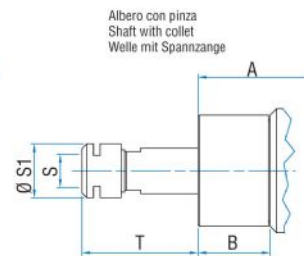
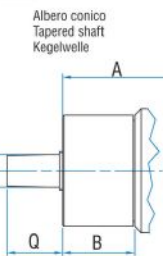
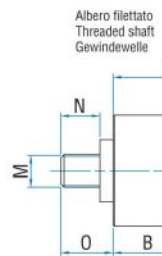
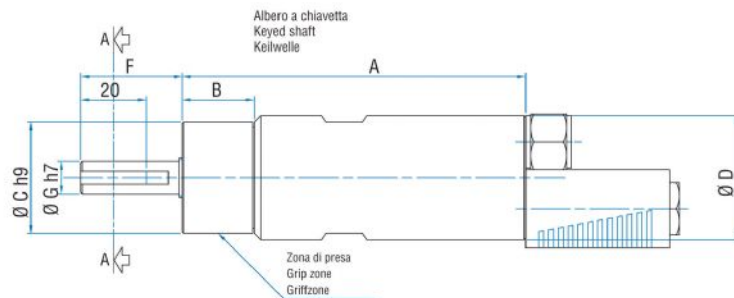
Model	Code	Fr (N)	Fa (N)	Co (N)
SP30R	8731252	2050	2350	4750

Overall dimensions

Serie SP Reversibile
Series SP Reversible
Serie SP Umsteuerbar



Flange disponibili per alcuni modelli.
Flanges available for some models.
Flansche erhältlich für einige Modelle.



Model	Code	A	B	C	D	F	G	H	I	L	M	N	O	P	Q	R	S	T
SP30R	8731252	146	31	48	50	31,5	14	3	5	M6	1/2"x20UNF	16	20,5	B12	26	ER16	2	